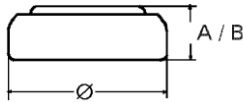


Data Sheet

Type Number 20321
Designation IEC SR 616 SW
System Silver oxide / Zinc / NaOH



Nominal Voltage 1,55 V
Typical Capacity C 14,5 mAh
 Load 47 kOhm, at 20°C down to 1.2 V

Weight (approx.) 0,25 g
Volume 0,06 ccm
Coding..... Date of Manufacturing
 Month / Year

Temperature Ranges

	min	max.
Storage	-10°C	60°C
Discharge	-10°C	60°C

Dimensions

	min	max.
Diameter (Ø).....	6,65	6,80
Height (A/B)	1,47	1,65

Segment Watch

Main Applications Watch
 Electronic

Typical Capacities (at 20°C)

Discharge Type	Load	End Voltage:	1.2 V
Continuous 24h/d,7d/w	68100 Ω	Time:	393 h