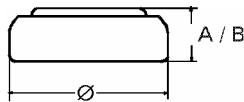


Data Sheet

Type Number 20337
Designation IEC SR 416 SW
System Silver oxide / Zinc /
 NaOH - Electrolyte



Nominal Voltage 1,55 V
Typical Capacity C 8,3 mAh
 Load 100 kOhm, at 20°C down to 1.2 V

Weight (approx.) 0,13 g
Volume
Coding..... Date of Manufacturing
 Month/Year

Temperature Ranges min max.
 Storage -10°C 60°C
 Discharge -10°C 60°C

Dimensions min max.
 Diameter (Ø)..... 4,65 4,80
 Height (A/B) 1,47 1,65

Segment Watch

Main Applications Watch
 Electronic Devices

Typical Capacities (at 20°C)

Discharge Type	Load	End Voltage:	1.2 V
Continuous 24h/d,7d/w	100000 Ω	Time:	479 h

All Data contained herein is for single cells

For battery applications, performance data may vary from single cell data, depending on specific battery configuration

VARTA Microbattery GmbH, Daimlerstr. 1, D-73479 Ellwangen/Jagst
 Tel.: (+49) 7961/921-0, Telefax: (+49) 7961/921-553

Subject to change without prior notice!
 Date of issue: 2010-01-19