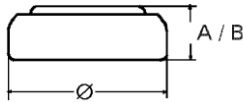


Data Sheet

Type Number 20339
Designation IEC SR 614 SW
System Silver oxide / Zinc /
 Alkaline - Electrolyte



Nominal Voltage 1,55 V
Typical Capacity C 11 mAh
 Load 100 kOhm, at 20°C down to 1.2 V

Weight (approx.) 0,21 g
Volume 0,04 ccm
Coding..... Date of Manufacturing
 Month / Year

Temperature Ranges

	min	max.
Storage	0°C	55°C
Discharge	0°C	55°C

Dimensions

	min	max.
Diameter (Ø).....	6,65	6,8
Height (A/B)	1,3	1,45

Segment Watch

Main Applications Watch
 Photo
 Electronic

Typical Capacities (at 20°C)

Discharge Type	Load	End Voltage:	1.2 V
Continuous 24h/d,7d/w Current [µA]:	100000 Ω 15,6	Time: Capacity [mAh]: Energy [mWh]:	700 h 11 17