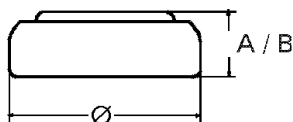


## Data Sheet

**Type Number** ..... 20357  
**System** ..... Silver oxide / Zinc/  
 KOH - Electrolyte



**Nominal Voltage** ..... 1,55 V  
**Typical capacity C** ..... 145 mAh  
 Load 5,6 kOhm, at 20°C down to 1.2 V

**Weight, approx** ..... 2,05 g  
**Volume** ..... 0,51 ccm  
**Coding** ..... Date of Manufacturing  
 Month/Year

**Temperature Ranges** min. max.  
 Storage ..... -10°C 65°C  
 Discharge ..... -10°C 65°C

**Dimensions** min. max.  
 Diameter ..... 11,25 11,6  
 Height (A/B) ..... 5,0 5,4

**Segment** ..... Watch

**Main Application** Medical  
 Photo  
 Electronic

**Typical Capacities (at 20°C)**

Discharge Type	Load	End-Voltage	1.2 V
Continuous (24 h/d, 7 d/w) Current, [µA]	5600 Ω	Time	545 h
		Capacity [mAh]	145
	275	Energy [mWh]	215