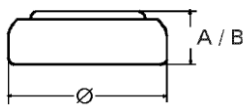


Data Sheet

Type Number 30371
Designation IEC SR 69
System Silver oxide / Zinc /
 KOH - Electrolyte



Nominal Voltage 1,55 V
Typical Capacity C 42 mAh
 Load 20 kOhm, at 20 °C down to 1.2 V

Weight (approx.) 0,61 g
Volume 0,14 ccm
Coding..... Date of Manufacturing
 Month / Year

Temperature Ranges	min	max.
Storage	-10 °C	65 °C
Discharge	-10 °C	65 °C

Dimensions	min	max.
Diameter (Ø).....	9,25	9,5
Height (A/B)	1,85	2,1

Segment Watch

Typical Capacities (at 20 °C)

Discharge Type	Load	End Voltage:	1.2 V
Continuous 24h/d,7d/w	20000 Ω	Time:	530 h
		Capacity [mAh]:	42
		Energy [mWh]:	65