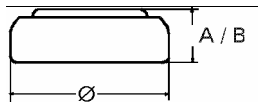


Data Sheet

Type Number 20373
Designation IEC SR 916 SW
System Silver oxide / Zinc / NaOH



Nominal Voltage 1,55 V
Typical Capacity C 30 mAh
 Load 30 kOhm, at 20°C down to 1.2 V

Weight (approx.) 0,5 g
Volume 0,12 ccm
Coding..... Date of Manufacturing Month/Year

Temperature Ranges min max.
 Storage -10°C 60°C
 Discharge -10°C 60°C

Dimensions min max.
 Diameter (Ø)..... 9,35 9,5
 Height (A/B) 1,47 1,65

Segment Watch

Main Applications Watch
 Photo
 Electronic

Typical Capacities (at 20°C)

Discharge Type	Load	End Voltage:	1.2 V
Continuous 24h/d,7d/	30000 Ω	Time:	519 h